



Childhood Dementia Initiative presents

The Winter Gala

Art Gallery of NSW 13 June 2025

Childhood Dementia Initiative is proud to present our flagship Winter Gala, an extraordinary evening of purpose and possibility at the iconic Art Gallery of NSW. This prestigious event brings together leaders, innovators, and change-makers united by one powerful mission: transforming the lives of children with dementia.

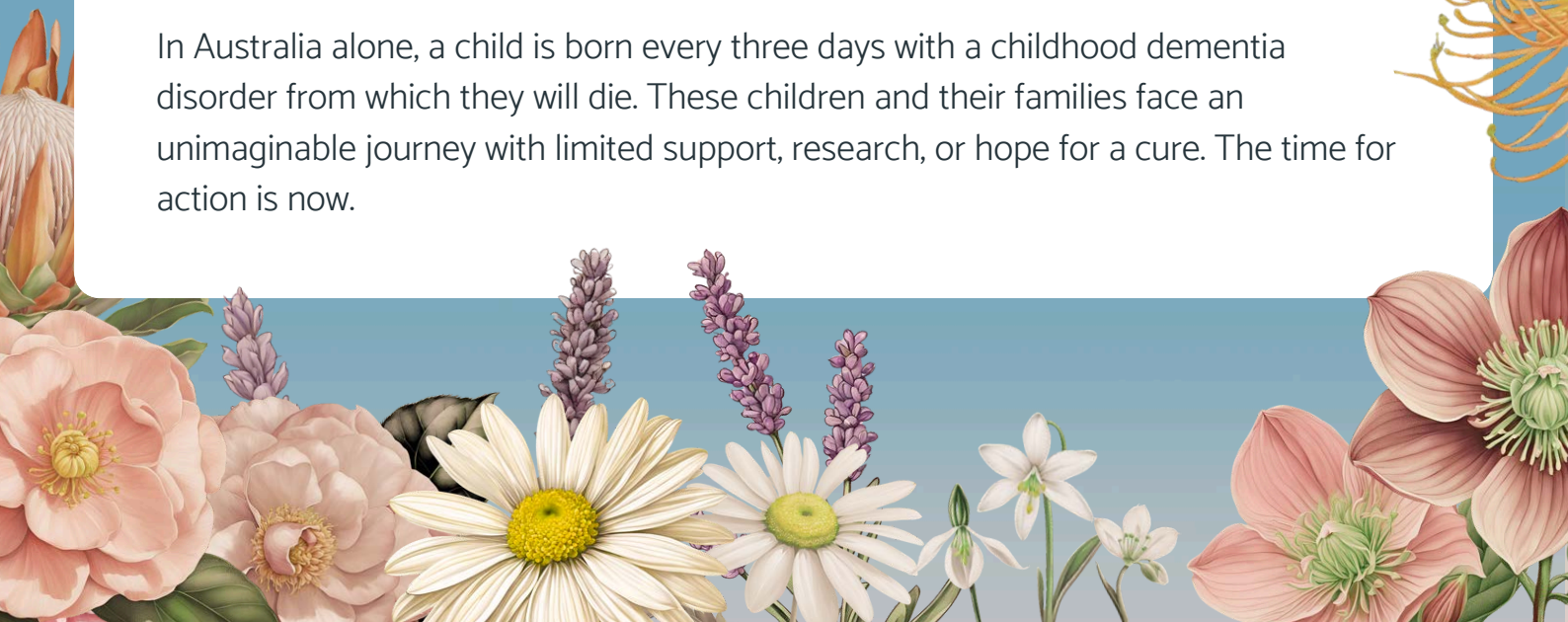
Our Mission and Impact

Childhood Dementia Initiative is driving world-first action for every child affected by dementia. As the global pioneer in this critical space, we're transforming the landscape of childhood dementia through:

- Groundbreaking research that could unlock new treatments
- Revolutionary approaches to care that enhance quality of life
- Policy reform that ensures no child fights this battle alone
- Support systems that empower families throughout their journey

The Challenge We Face

In Australia alone, a child is born every three days with a childhood dementia disorder from which they will die. These children and their families face an unimaginable journey with limited support, research, or hope for a cure. The time for action is now.





AN EVENING OF HOPE

Supporting Children with Dementia

The Power of Partnership

Our Winter Gala represents our most significant fundraising initiative for 2025. The success of this transformative evening relies on the generous support of organisations and individuals who share our vision for change. Through financial sponsorship, auction and raffle prizes, in-kind donations, and volunteer support, you can help us maximise the impact of this extraordinary event.

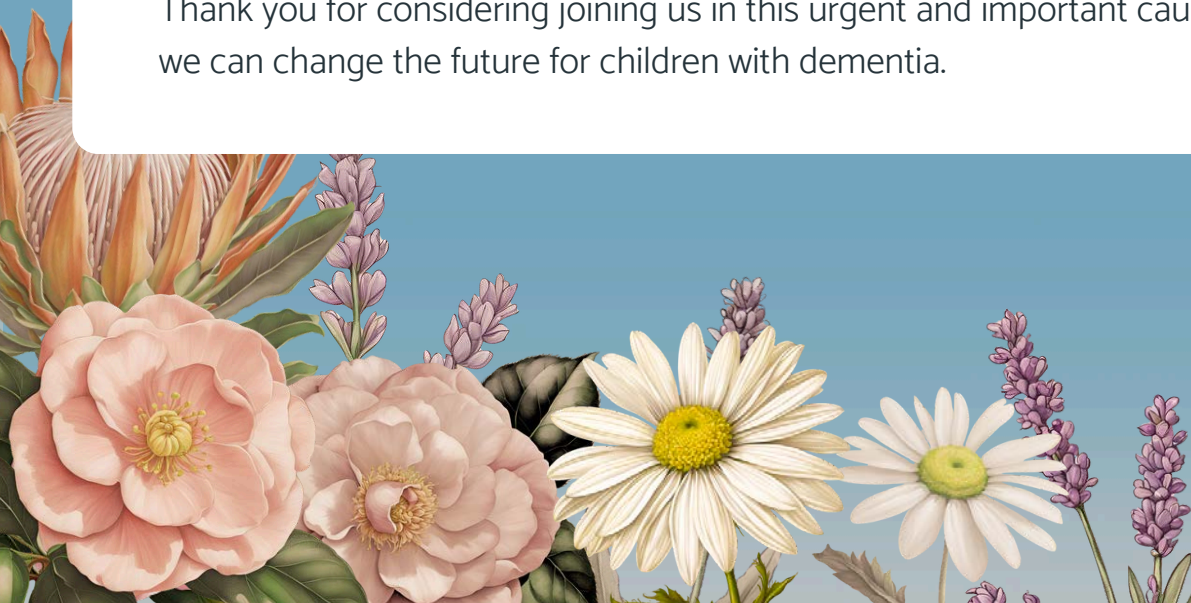
Why Your Support Matters

- Connect with 200+ influential leaders in healthcare, research, and philanthropy
- Demonstrate your commitment to a groundbreaking cause
- Enable vital research and support programs
- Create lasting change for families facing childhood dementia
- Position your brand as a champion for children's health

Partnership Opportunities

Below, we've outlined meaningful ways to partner with us in this vital mission. Each opportunity offers unique benefits and recognition, allowing you to align your support with your organisational goals and values.

Thank you for considering joining us in this urgent and important cause. Together, we can change the future for children with dementia.



PARTNERSHIP OPPORTUNITIES

Auction and Raffle Items

Our carefully curated guest list represents significant spending power and influence, with many attendees from Sydney's affluent North Shore and Northern Beaches communities. These decision-makers actively seek unique experiences and premium offerings that reflect their sophisticated tastes.

Past supporters have leveraged this unparalleled platform to showcase their brands with impressive returns. Your contribution positions you at the intersection of luxury and social impact, creating lasting connections with those who value both excellence and purpose.

SILENT AUCTION

We seek exceptional, exclusive experiences that inspire generous bidding and create lasting memories. Our curated auction features:

- Luxury travel experiences and private getaways
- One-of-a-kind artworks and bespoke commissions
- Exclusive dining experiences with renowned chefs
- Behind-the-scenes access to iconic Australian institutions
- Premium sporting and entertainment packages

RAFFLE PRIZES

Our high-end raffle drives excitement and engagement throughout the evening. Sought-after prizes include:

- Designer jewellery and luxury accessories
- Premium wine collections and exclusive cellar experiences
- Professional services (interior design, styling, wellness)
- High-end retail experiences and shopping packages
- Luxury spa and wellness retreats





PARTNERSHIP OPPORTUNITIES

Financial Sponsorship

Our annual Winter Gala unites visionary leaders who understand the power of creating meaningful change. Childhood dementia touches every aspect of our community; from healthcare and research to social services and education.

Your financial sponsorship positions your brand at the forefront of this vital cause, connecting you with an influential network of change-makers. We invite you to review our carefully curated sponsorship packages, each designed to offer meaningful recognition and impact.

SIGNATURE SPONSOR (ONE AVAILABLE) \$25,000

- Signature Sponsor for the 2025 Winter Gala
 - Exclusive Sponsor of the pre-event exhibition viewing for all event guests
 - VIP table for 10 guests
 - Premium logo placement on event materials
 - Logo placement during event
 - Dedicated social media posts
 - Full-page acknowledgement in event program
 - Option of gift for guests
 - CDI presence at Sponsor team days
 - Dedicated Partnerships Manager
 - Volunteering opportunities for staff
 - Employee giving program support
 - Partner Profile on CDI website Partnerships Page
 - First right of refusal for 2026 event
- 

PARTNERSHIP OPPORTUNITIES

Financial Sponsorship

PREMIER SPONSOR (ONE AVAILABLE) \$15,000

- Premier Sponsor for the 2025 Winter Gala
- Exclusive Sponsor of the Welcome Reception Drinks
- Welcome Drinks Reception
- Premium table for 10 guests
- Logo placement on event materials
- Half-page acknowledgement in event program
- CDI presence at Sponsor team days
- Dedicated Partnerships Manager
- Volunteering opportunities for staff
- Employee giving program support
- Partner Profile on CDI website Partnerships Page
- First right of refusal for 2026 event

CELEBRATION TOAST SPONSOR (ONE AVAILABLE) \$8,000

- Official sponsor of gala celebration toast
- Dedicated toast moment during program
- MC recognition during toast
- 2 event tickets
- Recognition in event program
- First right of refusal for 2026 event



PARTNERSHIP OPPORTUNITIES

Financial Sponsorship

WINE WALL SPONSOR (ONE AVAILABLE) \$8,000

- Exclusive branding of wine wall
- 2 event tickets
- Official 'Wine Wall Opening Moment' with MC recognition
- Premium positioned sponsor branding on Wine Wall
- Recognition in program
- Sponsor branded wine tags
- First right of refusal for 2026 event

OR

WINE WALL SPONSOR (ONE AVAILABLE) IN-KIND \$8,000

- Supply 100 bottles of wine varying in value (\$30-\$200 RRP), Mix of varieties (red, white, sparkling), Minimum 10 premium bottles (\$100+ RRP)
- Recognition as 'Official Wine Partner'
- 2 event tickets
- Official 'Wine Wall Opening Moment' with MC recognition
- Premium branding of Wine Wall
- QR codes linking to supplier's wine information
- Sponsor branded wine tags
- Recognition in program
- First right of refusal for 2026 event

PARTNERSHIP OPPORTUNITIES

Financial Sponsorship

ENTERTAINMENT SPONSOR (ONE AVAILABLE) \$8,000

- Recognition as 'Official Entertainment Partner'
- 2 event tickets
- VIP seating with prime view of performances
- Option to introduce one performance segment
- Logo display during performances
- Meet and greet with performers
- Signed merchandise from performers
- Recognition in program
- First right of refusal for 2026 event

SILENT AUCTION SPONSOR (ONE AVAILABLE) \$8,000

- Sponsor recognition on digital interfaces
- 2 event tickets
- Recognition in program
- Prominent logo placement on GalaBid platform and all auction collateral
- Sponsor logo alongside QR codes
- MC recognition during key auction moments
- Branded digital leaderboard
- Digital sponsor recognition during 'final countdown' moments
- First right of refusal for 2026 event

PARTNERSHIP OPPORTUNITIES

Financial Sponsorship

FLORAL SPONSOR (ONE AVAILABLE) \$8,000

- Recognition as Official Floral Partner
- 2 event tickets
- Prominent signage at floral installations
- Recognition in program
- Recognition on premium table centrepieces
- First right of refusal for 2026 event

OR

FLORAL SPONSOR (ONE AVAILABLE) IN-KIND \$8,000

- Supply Floral displays (entrance and stage), Table centrepieces, Volunteer lapel flowers
- Recognition as 'Official Floral Partner'
- 2 event tickets
- Professional photography of all arrangements
- 'Floral artistry by [Florist Name]' recognition
- Prominent signage at floral installations
- Recognition in program
- First right of refusal for 2026 event

PARTNERSHIP OPPORTUNITIES

Volunteers

The success of the Winter Gala relies on corporate partners who understand the value of community engagement and team development. We invite organisations to participate through corporate volunteering, offering your staff a meaningful opportunity to develop customer service skills while supporting a vital cause. Your team's support ensures the success of this transformative evening while creating lasting impact for children with dementia.

Benefits for your team:

- Hands-on experience at a high-profile charity event
- Direct interaction with business and philanthropy leaders
- Team building in an exclusive environment
- Enhanced corporate social responsibility profile
- Meaningful contribution to a pioneering health cause

**Transform the future for children with dementia.
Be part of the change. Reach out today.**

Deanne Bennett
Partnerships Fundraising Manager
0447 474 979
deanne@childhooddementia.org

We look forward to hearing from you to discuss your partnership.

The page features a light blue background with decorative floral illustrations. In the top-left and top-right corners, there are branches with small, golden-brown leaves. Along the bottom edge, there is a variety of flowers, including large pink peonies, white daisies with yellow centers, purple lavender spikes, and smaller white and pink blossoms. A large, bright yellow flower is partially visible on the right side.

childhood dementia INITIATIVE

www.childhooddementia.org
hello@childhooddementia.org